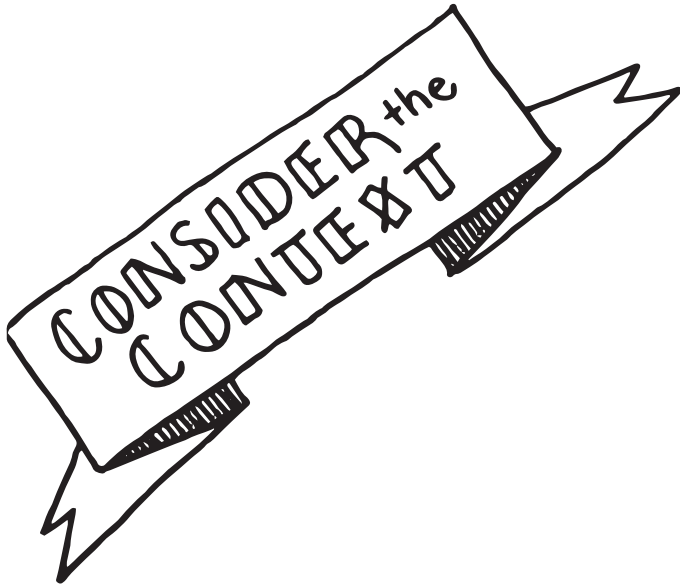


YOUR
NAME
HERE:

VOICE and CHOICE

Abid
AGENCY BY DESIGN

CO-CREATED BY: JULIE RAINS +
SARAH SHEYA
ARTWORK BY: JULIE RAINS



Where was the content made? When was it made?
Who made it? What else was going on at this
place and time?

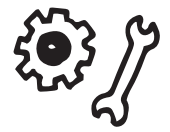
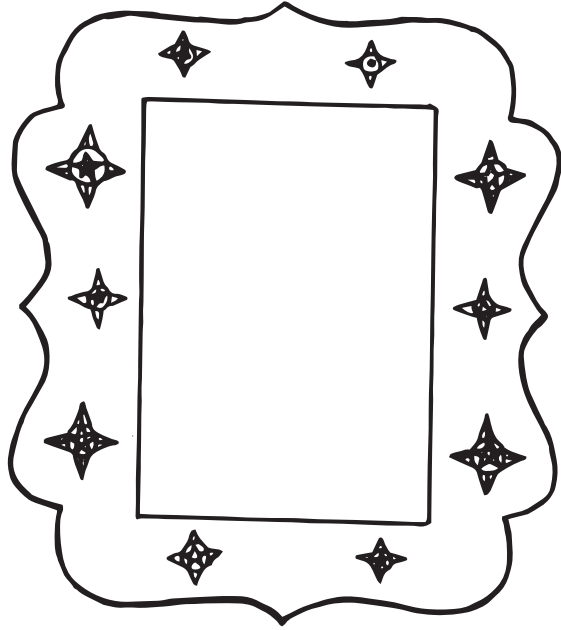


CONTENT



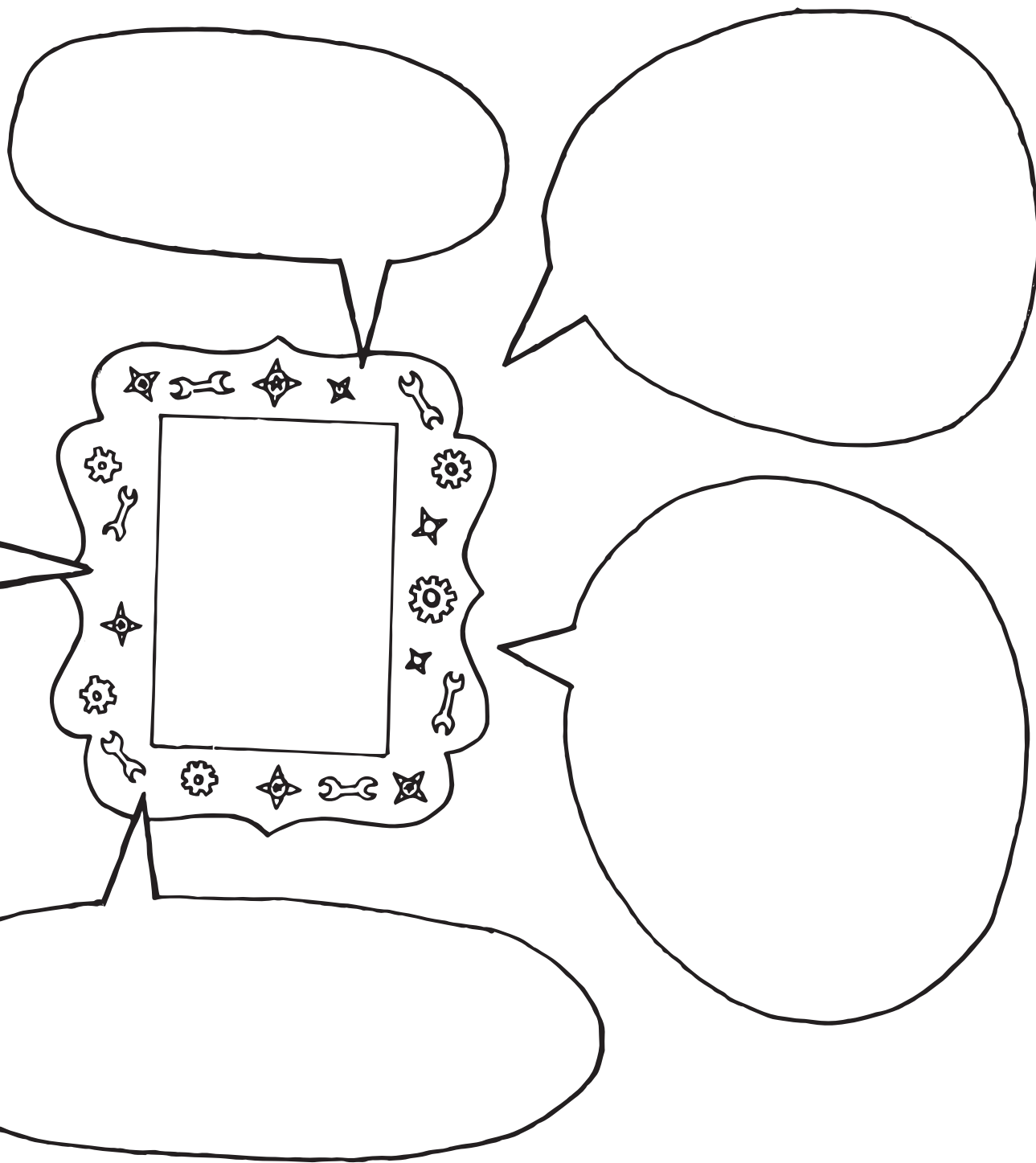
MAKER CHOICES

What choices do you think the maker(s) made when designing this content?
Why do you think they made these choices?



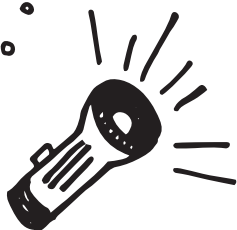
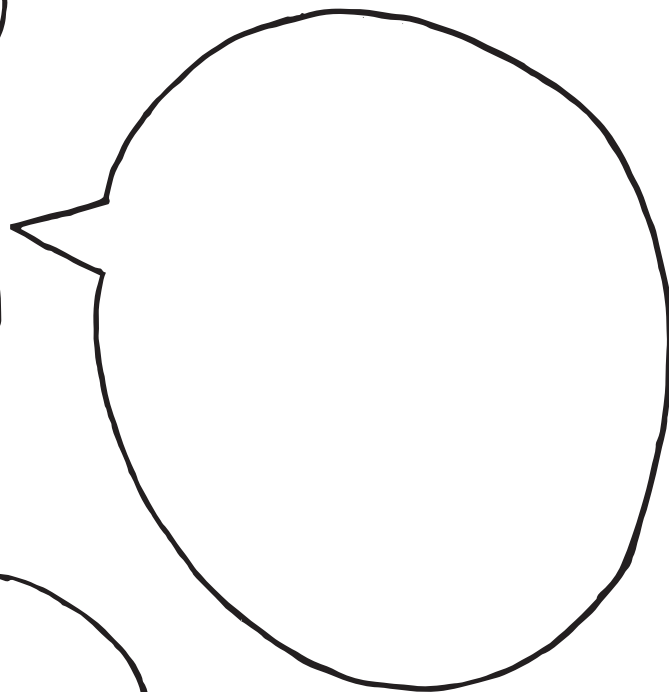
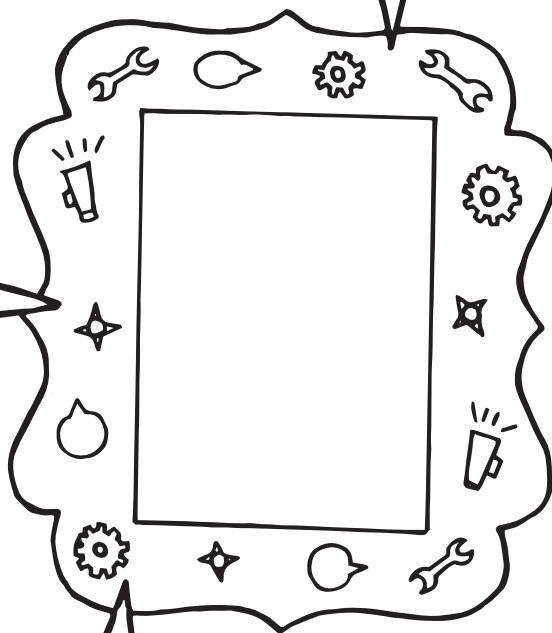
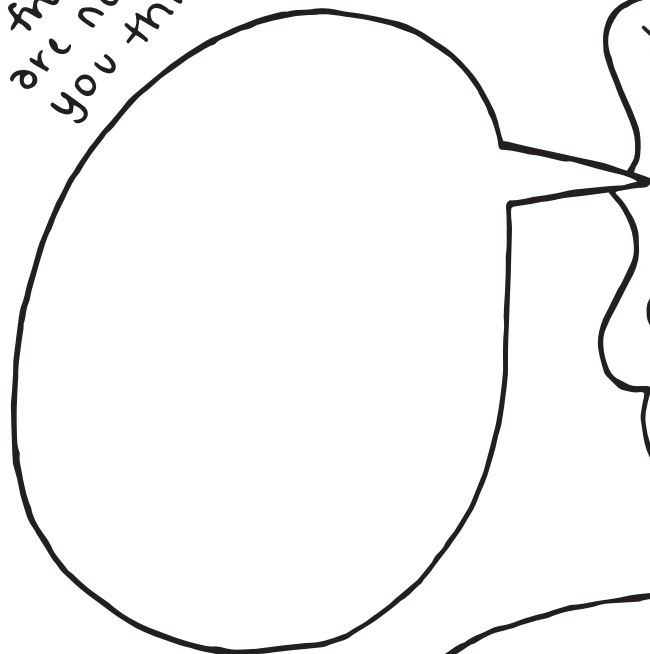
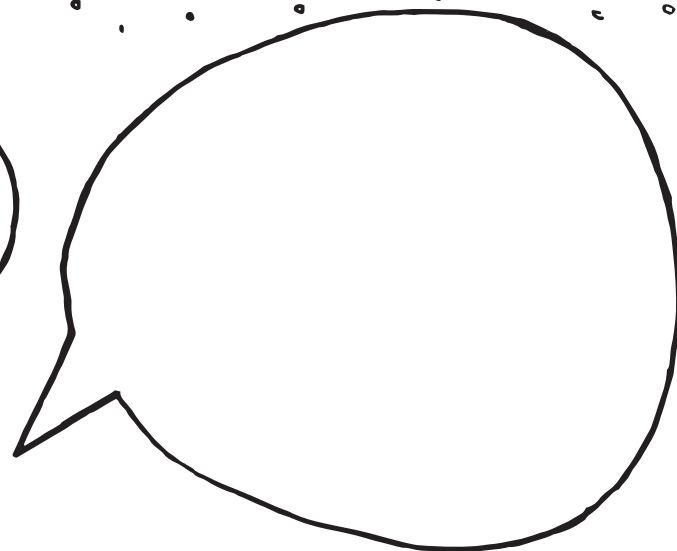
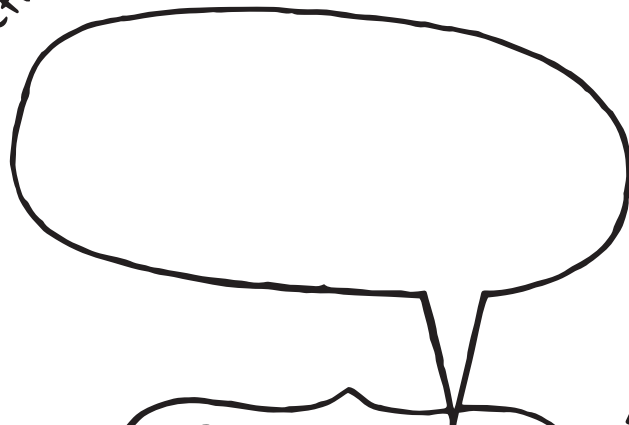
**VOICES
PRESENT**

Whose voices are present in
this content? What perspectives
are represented?



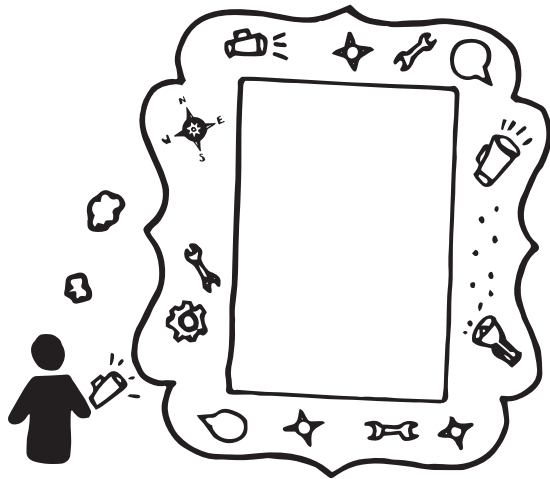
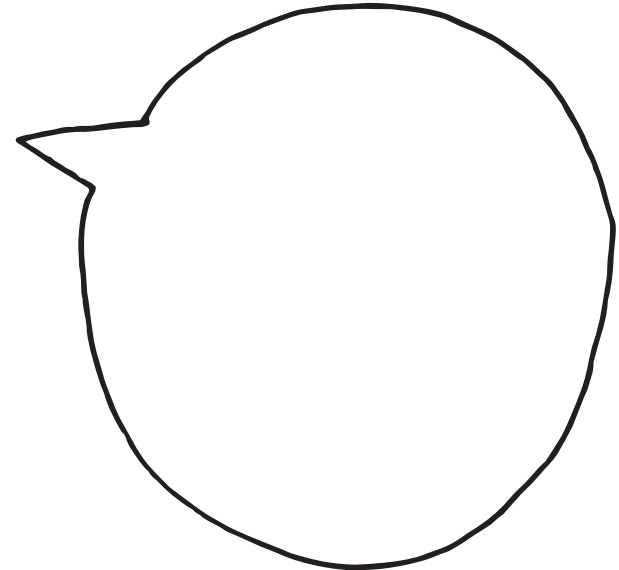
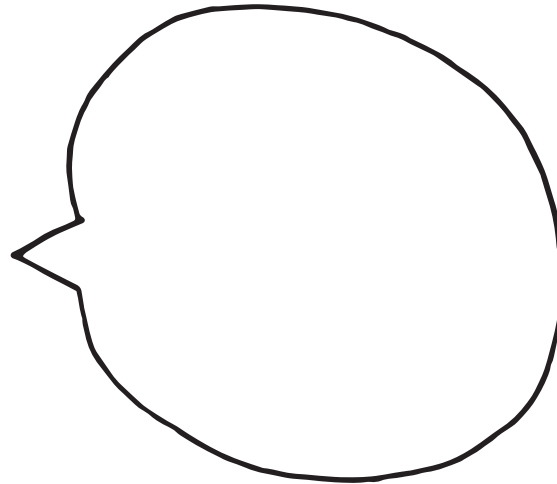
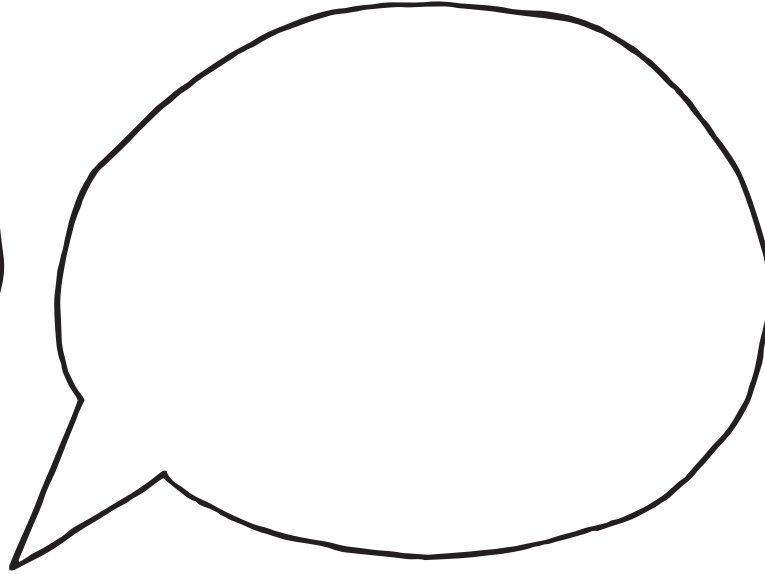
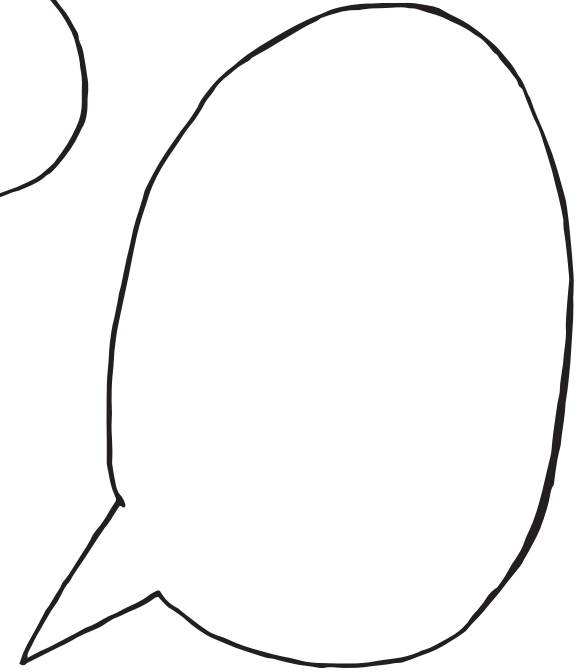
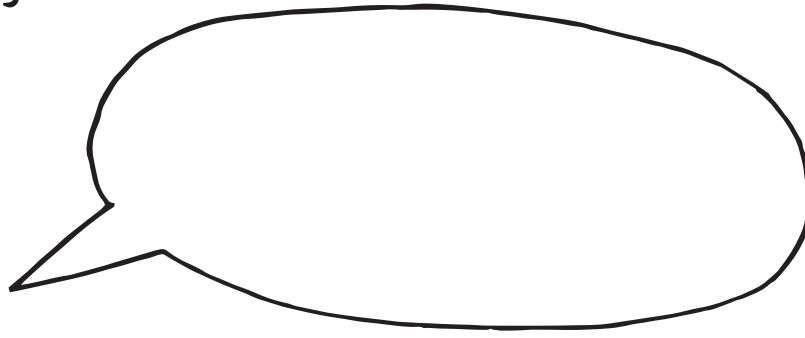
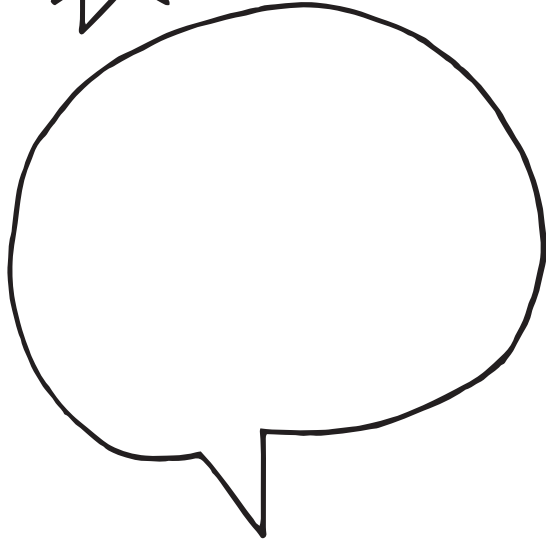
VOICES MISSING

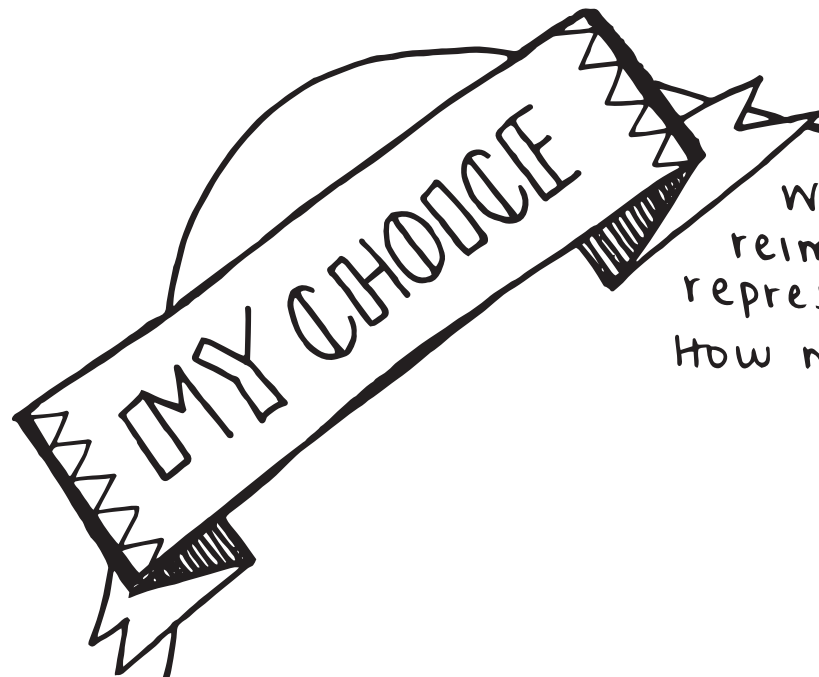
Whose voices are missing from this content? What perspectives are not represented? Why do you think that is?



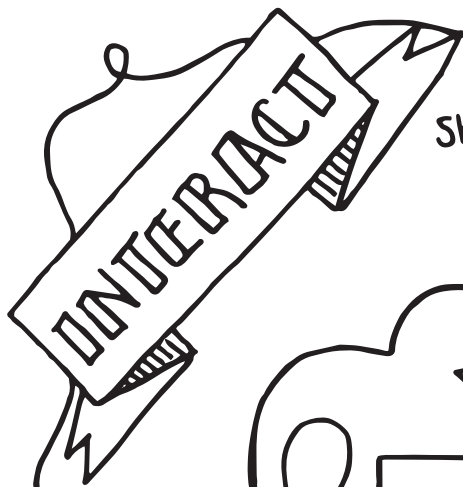
MY VOICE

What's your voice? What perspectives do you bring to this content?

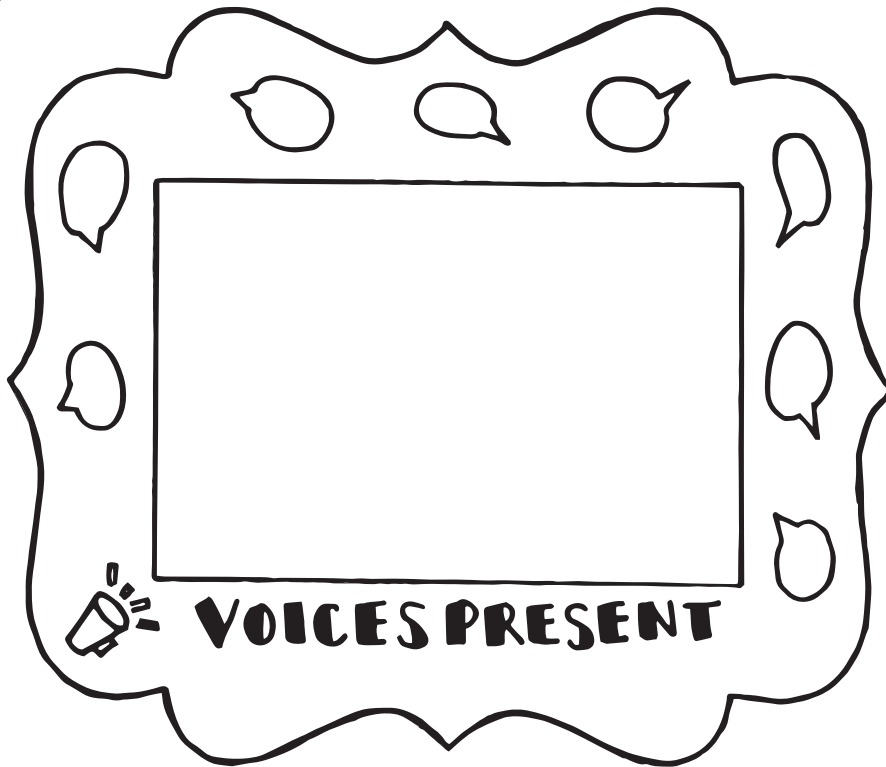




What could you do to redesign or reimagine this content to better represent your perspective(s)? Why? How might it look differently?

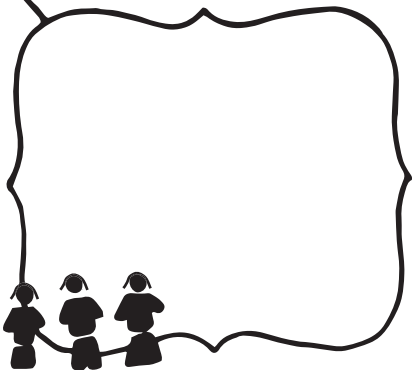


Share your redesign to
a peer or peers.



Ask yourself:

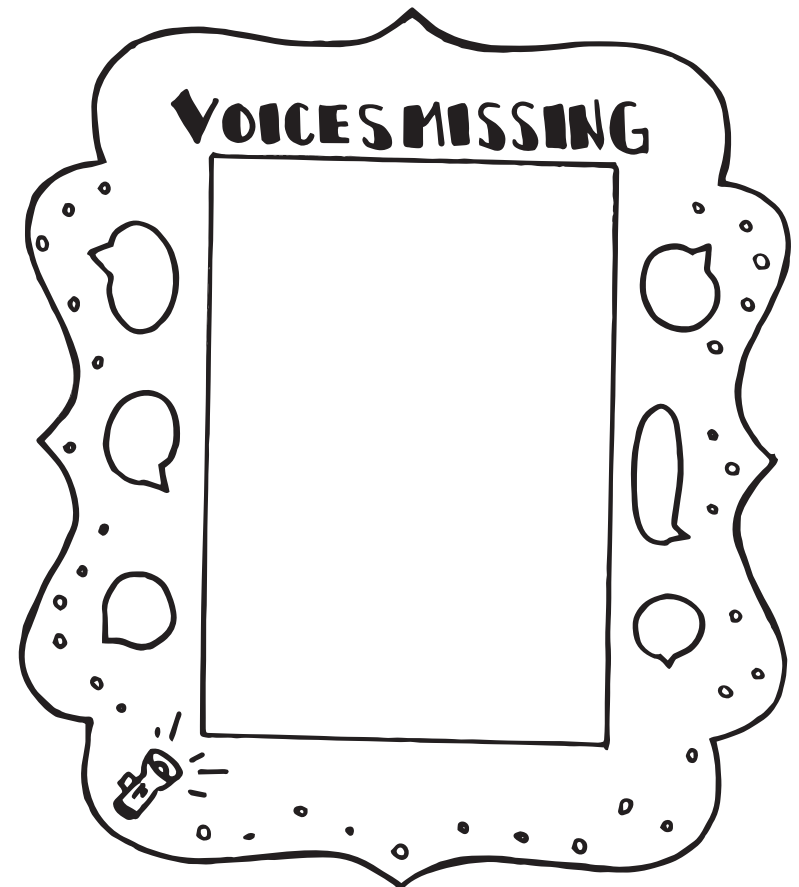
Is there anyone else you
might share your redesign
with to get a different
perspective?



Ask them:

Whose voices and perspectives
do they see represented in this
content?

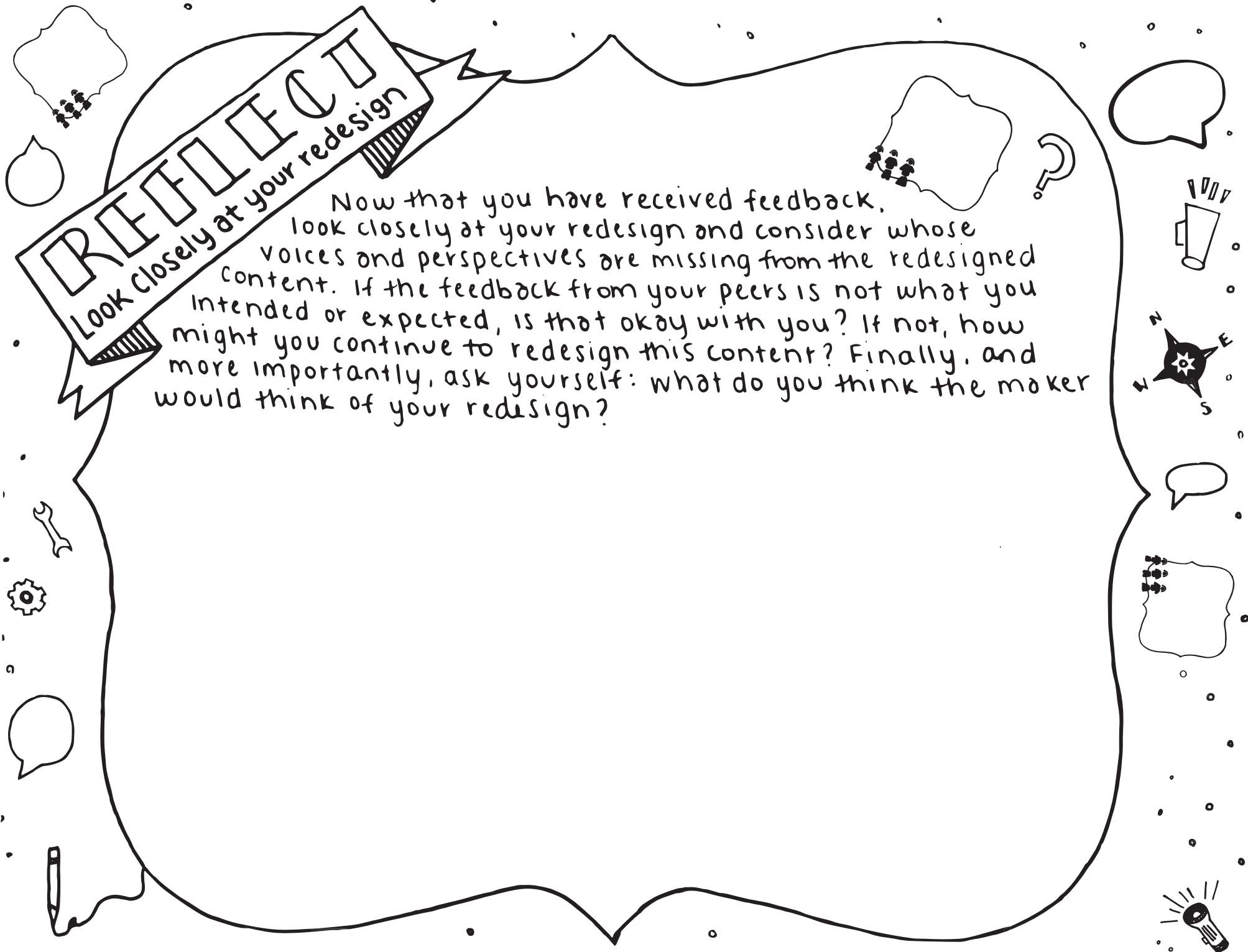
Whose voices and perspectives
do they think are missing?



REFLECT

Look closely at your redesign

Now that you have received feedback, look closely at your redesign and consider whose voices and perspectives are missing from the redesigned content. If the feedback from your peers is not what you intended or expected, is that okay with you? If not, how might you continue to redesign this content? Finally, and more importantly, ask yourself: what do you think the maker would think of your redesign?



REFLECT

Look closely at your redesign

